



Owner's Manual

Integrated Optical Touch Display



Contents:

- **Set Up Instructions**
- **Troubleshooting Tips**

www.horizondisplay.com

Horizon Display
One Rancho Circle
Lake Forest, CA 92630
(949) 595-8244

Set Up Instructions

Connecting the Cables and Turning On the Horizon Display Optical Touch Monitor

- Connect the cables and power on in the following order:
 1. Connect the video cable from the computer to the monitor.
 2. Connect the power cable to the monitor and turn on.
 3. Connect the power cable to the computer and turn on.
 4. Connect the USB cable from the monitor to your computer.

The computer will automatically detect the touch monitor as new USB hardware.



Calibrating your Touch Monitor

- First close all open applications

To enter calibration simply do one of the following tasks:

- a. Press [Scroll Lock] on the key board six times. (This option can only be performed on a PC)

OR

- b. Gently push a ballpoint pen (or similar object) into the recessed hole on the calibration box adhered to the back of the touch monitor, and hold until the touch monitor beeps.

- When the calibration sequence starts, the cursor will automatically move to the top left of the screen. Once you locate the cursor continue with the following steps:
 1. Touch and hold your finger on the screen at that position until your hear a continuous beep.
 2. The cursor will move to the top right corner. Touch and hold your finder on the screen at that position until you hear a continuous beep.
 3. The cursor will move to the bottom right corner. Touch and hold your finder on the screen at that position until you hear a continuous beep
 4. The cursor will move to the bottom left corner. Touch and hold your finder on the screen at that position until you hear a continuous beep.
- Test the calibration by moving the cursor around the screen while examining how closely it follows your finger. If the calibration is not satisfactory recalibrate.

This completes the calibration process

Calibration Notes

- When removing your finger, lift it straight off the screen, making sure you don't drag your finder across the screen.
- If you need to exit calibration mode you can do so by pressing the calibrate button located on the calibration box adhered to the back of the touch monitor or by pressing the [Scroll Lock] key twice.

Using Your Touch Monitor

Single Click, Double Click & Right

- Single Click— simply touch anywhere on the screen.
- Double Click—tap the screen twice with your finger or alternate input device.
- Right Click—touch and hold.
 - These actions can be configured using Horizon Display's USB Configuration utility by installing the optional touch monitor software below. See page 5 for more details. (USB Configuration utility is PC compatible only. See below for more details.)

Buzzer Tones

- The following table explains the different buzzer tones that occur during various actions:

Action	Buzzer Tones
Power Up	<Beep>
Touch	<Beep>
Double Touch	<Beep> <Highest Beep>
Touch and Hold	<Beep> <High Beep>
Fault	<Long Beep> x 3
Enter Calibration Mode	<Long Beep>
Exit Calibration Beep	<Long Low Beep>

- You can turn off the buzzer tones using Horizon Display's USB Configuration utility by installing the optional touch monitor software below. See page 5 for more details. (USB Configuration utility is PC compatible only. See below for more details.)

Optional Touch Monitor Software

- It is important to know that Horizon Display's Optical touch monitors require no special software. The touch monitor communicates directly with the computer's operating system via the USB interface. However, an optional USB Configuration program is available that allows you to change the default operating parameters if required.

Installing the touch monitor software

- Download and run the installation program from the following webpage: <http://nextwindow.com/support/software/index.html> (Optional Software is PC compatible only. To configure your Horizon Display optical touch monitor for MAC)

When downloaded, the installation program installs five small programs:

Program Name	Purpose
USBConfig	Allows you to change the USB operating parameters.
SerialConfig	Allows you to configure the serial communications and calibrate the touch monitor
SerialRuntime	Provides serial communications between the touch monitor and the computer
PanelDesigner	Allows you to design an off-screen touch panel
PanelRuntime	Runs the off-screen touch panel

Troubleshooting

- This section provides some diagnostic tests and solutions that you can apply in the event there is a problem with the touch monitor. If the problem persists or you require additional support, contact Horizon Display support department at (888) 737-4674 or by emailing support@horizondisplay.com.

Touch monitor does not respond to touches

- Make sure the USB cable is connected to the monitor and the computer.
- If the problem still persists, try plugging the monitor into a different USB port on the computer.

Touch produces erratic responses on screen

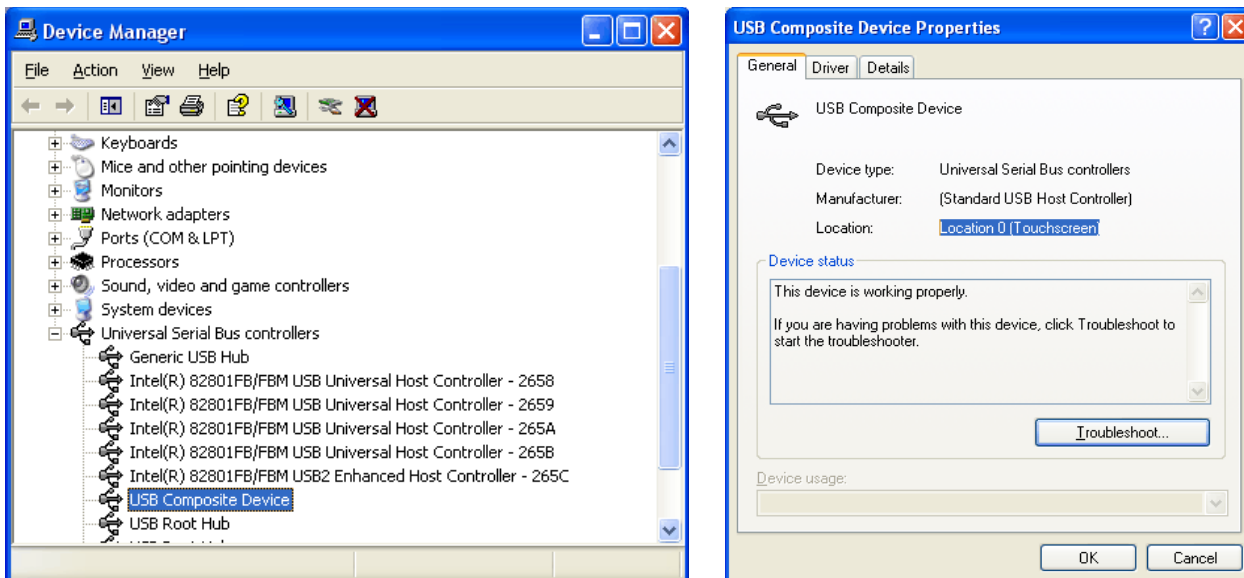
- This can occur if the touch monitor has not been calibrated correctly. To fix the problem, recalibrate the touch monitor.

Unable to calibrate the touch monitor

- If you have a problem calibrating your touch monitor contact Horizon Display for support.

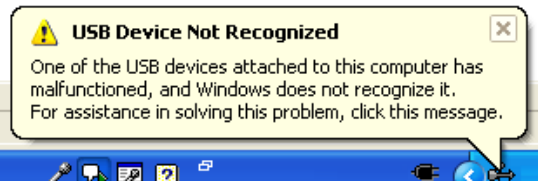
“Uninstalling and reinstalling the USB device

- From the Start menu computer select: Settings/Control Panel/System (in traditional view) and then click on Hardware tab. You should now enter the Device Manager application.



- Right click on [USB Composite Device] and then click on [Properties].
 - Once on the Properties screen, verify that the location refers to the touch monitor.
 - Close the Properties screen.
 - With USB Composite Device selected in the Device manager list, press the Delete key on your keyboard.
 - A dialog box will appear verifying the uninstall process. Simply click the OK button to confirm.
- Your touch monitor has now been uninstalled. To reinstall, follow the setup instructions on Page 2**

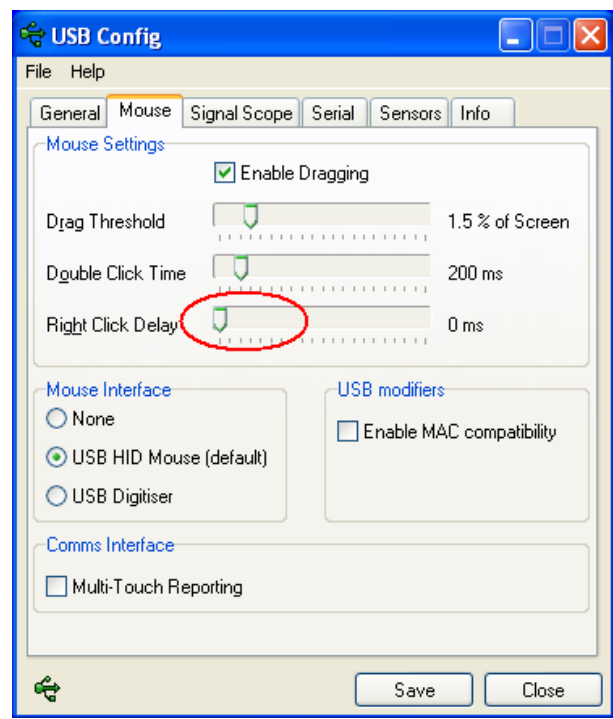
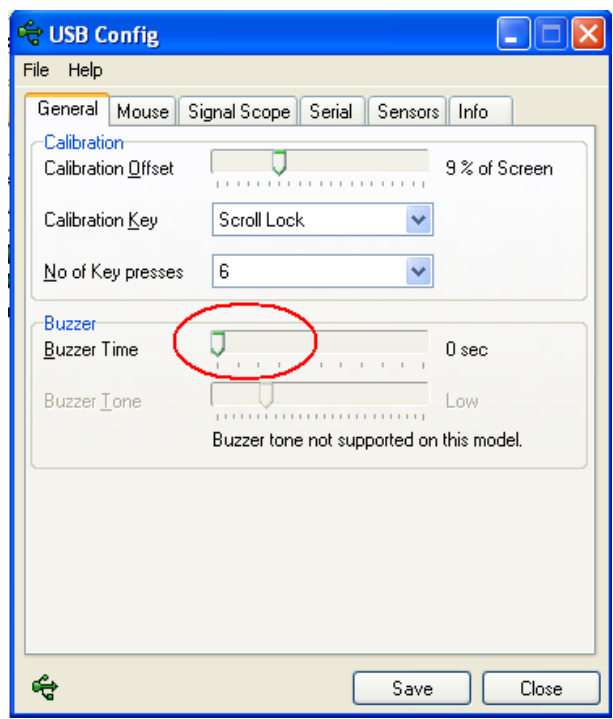
“USB not recognized” message appears on screen



- This message can appear if the USB port on the computer does not recognize the monitor. This is often resolved by utilizing a different USB port on the computer.

Buzzer Tones Configuration

- The buzzer tones can be configured by using the USB Config utility. (USB Configuration utility is PC compatible only.)
- Go to “Start”→ “Programs” → “Next Window” →”Touch+2.5” →”USB Config”
- After opening the program click on the “General” tab
- Locate “Buzzer Time.” This will allow you to configure the duration of the buzzer tones.
- Dragging the cursor to “0” will disable the buzzer tone completely.
- See picture below left.



Right Click Configuration

- The right click feature can be configured by using the USB Config utility. (USB Configuration utility is PC compatible only.)
- Go to “Start”→ “Programs” → “Next Window” →”Touch+2.5” →”USB Config”
- After opening the program click on the “Mouse” tab
- Locate the “Right Click Delay.” This will allow you to configure the delay time need to initiate the right click function.
- Dragging the cursor to “0” will disable the right click function completely.
- See picture above right.

Cleaning Instructions

- Recommended cleaning solution consists of a 70% or higher Isopropyl Alcohol in conjunction with a fine micro-fiber cloth.
- Wipe lightly in one direction. Do not buff aggressively or wipe in a circular motion.
- Long term maintenance should be performed with distilled water and a micro-fiber cloth. 70% or higher Isopropyl Alcohol should be used sparingly. A long term alcohol solution not recommended.

Regulatory Compliance Information

Federal Communication Commission (FCC) Statement

This equipment has been tested and found to comply with the limits for a class A digital device, pursuant to part 15 of the FCC Rules. These limits are designed to provide reasonable protection against harmful interference when the equipment is operated in a commercial environment. This equipment generates, uses, and can radiate radio frequency energy and, if not installed and used in accordance with the instruction manual, may cause harmful interference to radio communications. Operation of this equipment in a residential area is likely to cause harmful interference in which case the user will be required to correct the interference at his own expense.

This device complies with Part 15 of the FCC Rules. Operation is subject to the following two conditions: (1) this device may not cause harmful interference, and (2) this device must accept any interference received, including interference that may cause undesired operation.

Changes or modifications not expressly approved by the party responsible for compliance could void the user's authority to operate the equipment.

**For Customer Support please contact Horizon Display at
(888) 737-4674
support@horizondisplay.com**

**Or visit us at
www.horizondisplay.com**